

### General Description

The RLCP6219 series are highly accurate, low noise, CMOS LDO Voltage Regulators. Offering low output noise, high ripple rejection ratio, low dropout and very fast turn-on times, the RLCP6219 series is ideal for today's cutting edge mobile phone. Internally the RLCP6219 includes a reference voltage source, error amplifiers, driver transistors, current limiters and phase compensators.

The output voltage is set by current trimming. Voltages are selectable in 100mV steps within a range of 1.2V to 5.0V. The RLCP6219 series is also fully compatible with low ESR ceramic capacitors, reducing cost and improving output stability. This high level of output stability is maintained even during frequent load fluctuations, due to the excellent transient response performance and high PSRR achieved across a broad range of frequencies. The CE function allows the output of regulator to be turned off, resulting in greatly reduced power consumption.

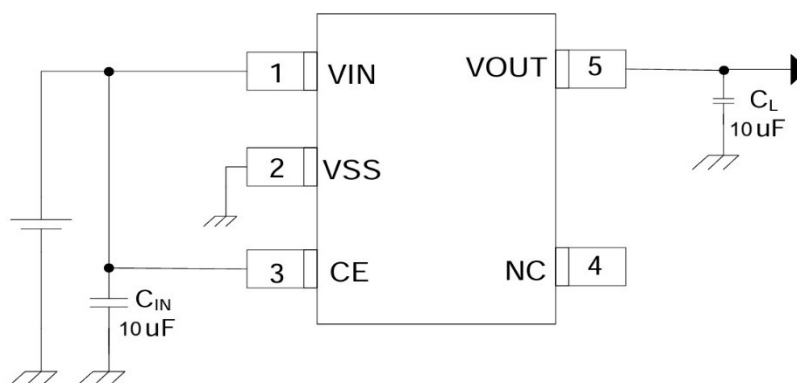
### Features

- Low power consumption: 40uA (Typ.)
- Low voltage drop: 0.12V@100mA@VOUT=3.3V(Typ.)
- Standby Mode: 0.1uA
- Low temperature coefficient
- High input voltage (up to 8V)
- Output voltage accuracy: tolerance  $\pm 2\%$
- SOT23-5、SOT89 package

### Applications

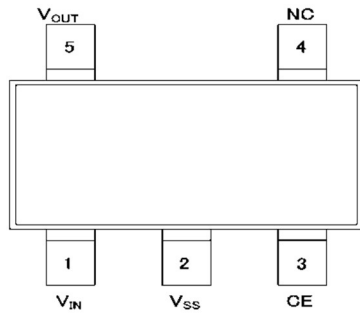
- Battery-powered equipment
- Communication equipment
- Mobile phones
- Portable games
- Cameras, Video cameras
- Reference voltage sources

### Typical Application Circuit



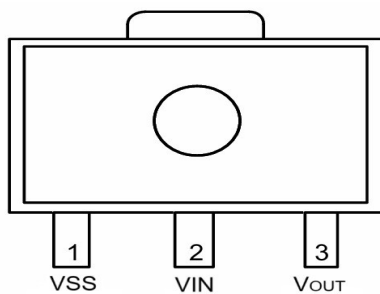
**Package and Pin assignment(Top View)**

**SOT23-5(Top View)**



Pin Number	Symbol	Function
1	VIN	Power Input Pin
2	VSS	Ground
3	CE	Chip Enable Pin
4	NC	No Connection
5	VOUT	Output Pin

**SOT89(Top View)**



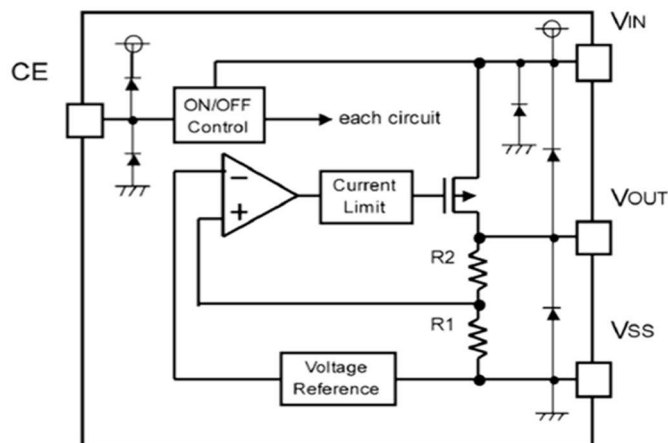
Pin Number	Symbol	Function
1	VSS	Ground
2	VIN	Power input Pin
3	VOUT	Output Pin

**Order information**

RLCP6219-①②③④⑤/R⑥

Designator	Symbol	Description
①②	Integer	Output Voltage (eg:28, Output 2.8V)
③④⑤	ST5	SOT23-5
	SP3	SOT89-3
⑥	6	6*500=3000PCS

**Block Diagram**



**Absolute Maximum Ratings**

Item	Min	Max	Unit
Supply Voltage (1)	-0.3	8.0	V
Operating Temperature Range	-40	+85	°C
Storage Temperature Range	-50	+125	°C

Note:

These are stress ratings only. Stresses exceeding the range specified under “Absolute Maximum Ratings” may cause substantial damage to the device. Functional operation of this device at other conditions beyond those listed in the specification is not implied and prolonged exposure to extreme conditions may affect device reliability.

**Thermal Information**

Item	Package	Value	Unit
Power Dissipation	SOT23-5	0.25	W
	SOT89	0.5	
Thermal Resistance $\theta_{ja}$ (Junction to Ambient) (Assume no ambient airflow, no heat sink)	SOT23-5	500	°C/W
	SOT89	200	

Note: PD is measured at  $T_a = 25^\circ\text{C}$

## Electrical Characteristics (Ta=25°C)

Parameter	Symbol	Conditions	Min.	Typ.	Max.	Unit
Output Voltage	Vout	Vin=Vout+1V 1.0mA≤Iout≤30mA	Vout x0.98	--	Vout x1.02	V
Output Current*1	Iout	Vin-Vout=1V	--	350	--	mA
Line Regulation	$\Delta V_{out1}/(\Delta V_{in} \cdot V_{out})$	4.3V≤Vin≤8V Iout=10mA	--	0.05	0.2	%V
Load Regulation	$\Delta V_{out}$	Vin=4.3V 1.0mA≤Iout≤100mA	--	10	30	mV
Output voltage Temperature Coefficiency	$\Delta V_{out}/(T_a \cdot V_{out})$	Iout=30mA 0°C≤Ta≤70°C	--	±100	--	Ppm/°C
Supply Current	Iss1		--	40	--	uA
Input Voltage	Vin	--	--	--	8	V
PSRR	PSRR	F=1KHz, Vin=4.3Vdc+1Vpp	--	60	--	dB

### Notes

1. Please use this IC within the stated absolute maximum ratings. The IC is liable to malfunction should the ratings be exceeded.
2. Where wiring impedance is high, operations may become unstable due to noise and/or phase lag depending on output current. Please keep the resistance low between VIN and VSS wiring in particular.
3. Please wire the input capacitor (CIN) and the output capacitor (CL) as close to the IC as possible.

### **Output Voltage Control**

The P-channel MOSFET is connected to the VOUT pin, driven by the subsequent output signal. The output voltage at the VOUT pin is controlled and stabilized by a system of negative feedback. The IC's internal circuitry can shut-down by the CE pin's signal

### **Low ESR Capacitors**

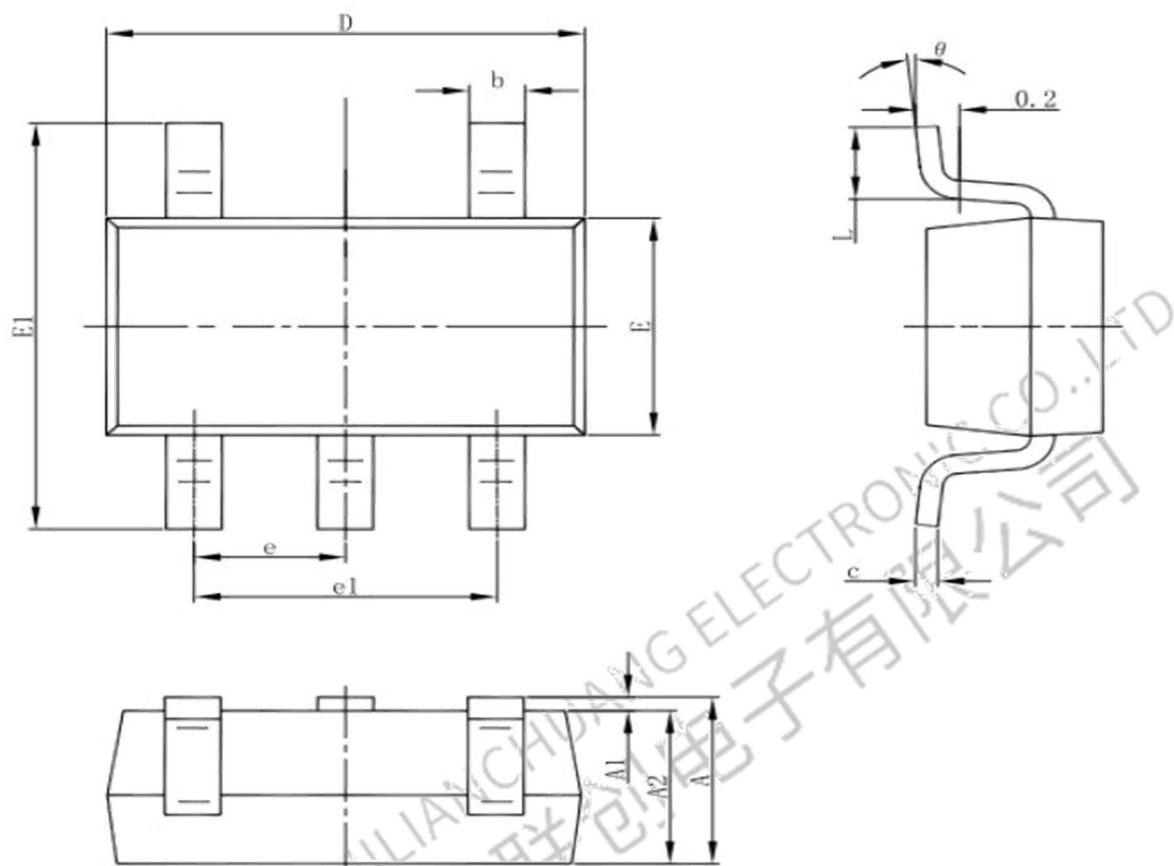
With the RLCP6219 series, a stable output voltage is achievable even if used with low ESR capacitors as a phase compensation circuit is built-in. In order to ensure the effectiveness of the phase compensation, we suggest that an output capacitor (CL) is connected as close as possible to the output pin (VOUT) and the GND pin. Please use an output capacitor with a capacitance value of at least 10uF. Also, please connect an input capacitor (CIN) of 10uF between the VIN pin and the GND pin in order to ensure a stable power input. Stable phase compensation may not be ensured if the capacitor runs out of capacitance when depending on bias and temperature. In case the capacitor depends on the bias and temperature, please make sure the capacitor can ensure the actual capacitance.

### **CE Pin**

The IC's internal circuitry can be shutdown via the signal from the CE pin with the RLCP6219 series. The operational logic of the IC's CE pin is selectable (please refer to the selection guide). Although the CE pin is equal to an inverter input with CMOS hysteresis, with either the pull-up or pull-down options, the CE pin input current will increase when the IC is in operation. We suggest that you use this IC with either a VIN voltage or a VSS voltage input at the CE pin. If this IC is used with the correct specifications for the CE pin, the operational logic is fixed and the IC will operate normally. However, supply current may increase as a result of through current in the IC's internal circuitry.

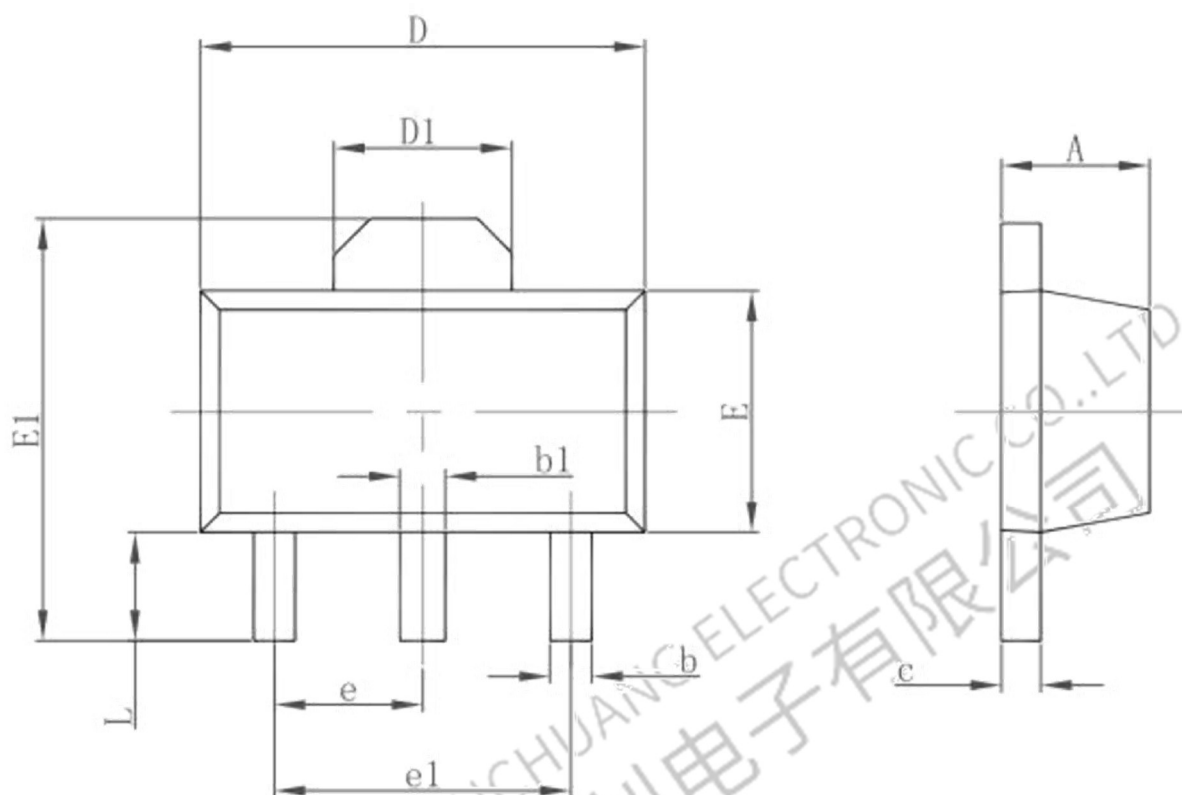
## Packaging Information

### SOT23-5 Outline Dimensions



Symbol	Dimensions In Millimeters		Dimensions In Inches	
	Min	Max	Min	Max
A	1.050	1.250	0.041	0.049
A1	0.000	0.100	0.000	0.004
A2	1.050	1.150	0.041	0.045
b	0.300	0.500	0.012	0.020
c	0.100	0.200	0.004	0.008
D	2.820	3.020	0.111	0.119
E	1.500	1.700	0.059	0.067
E1	2.650	2.950	0.104	0.116
e	0.950(BSC)		0.037(BSC)	
e1	1.800	2.000	0.071	0.079
L	0.300	0.600	0.012	0.024
θ	0°	8°	0°	8°

**3-pin SOT89 Outline Dimensions**



Symbol	Dimensions In Millimeters		Dimensions In Inches	
	Min.	Max.	Min.	Max.
A	1.400	1.600	0.055	0.063
b	0.320	0.520	0.013	0.020
b1	0.400	0.580	0.016	0.023
c	0.350	0.440	0.014	0.017
D	4.400	4.600	0.173	0.181
D1	1.550 REF.		0.061 REF.	
E	2.300	2.600	0.091	0.102
E1	3.940	4.250	0.155	0.167
e	1.500 TYP.		0.060 TYP.	
e1	3.000 TYP.		0.118 TYP.	
L	0.900	1.200	0.035	0.047



**Important Note**

As the RLC product continues to improve gradually, we may experience significant changes. RLC reserves the right to correct, modify, enhance, and amend the products and services they provide, as well as the right to discontinue any product or service. Before placing an order, customers should obtain the latest information to verify that it is current and complete. All products sold must comply with RLC's terms and conditions in order to ensure proper processing of orders. RLC guarantees that the products they sell conform to the terms and conditions applicable to semiconductor sales. Only under this guarantee does RLC consider it necessary to employ testing and quality control measures for their products. Unless mandated by applicable laws requiring strict compliance, there is no obligation for testing all product parameters. RLC does not assume responsibility for customer product design or application. The materials provided contain circuit examples and usage methods solely for reference purposes; they do not guarantee suitability for volume production designs. Additionally, these materials may contain errors that could result in damages incurred by customers; therefore, RLC disclaims any liability in such cases. Customers are advised to use products within the limits specified in these materials while paying particular attention to absolute maximum ratings, operating voltages, and voltage characteristics. Any use of products outside of these specifications absolves RLC from responsibility; customers must accept full responsibility themselves. To minimize risks associated with customer-designed applications, adequate design safety measures should be implemented. When using RLC products, please ensure compliance with relevant laws and regulations pertaining to your country or region regarding application standards as well as testing requirements related to safety performance. For exports of RLC products overseas, it is essential that you adhere strictly to foreign exchange regulations and transaction laws throughout all necessary procedures involved in exportation processes. In case of disposal of any abandoned RLC product(s), please follow appropriate rules and regulations for proper disposal.

RLC products are not designed to be radiation - resistant. Based on the intended usage, customers can incorporate radiation protection measures during the product design process. Under normal circumstances, RLC products do not harm human health. However, since they contain chemicals and heavy metals, do not put them in your mouth. Additionally, the fracture surfaces of wafers and chips can be sharp. When touching them with bare hands, please be careful to avoid injury. Semiconductor products have a certain probability of failure or malfunction. To prevent disruptions and social damages resulting from personal accidents, fire accidents, etc., as well as to avoid malfunctions, customers are required to be responsible for comprehensive design, implementing fire - spread prevention measures, and safety design against misoperation. Please conduct a full assessment of the entire system, and customers can determine its applicability on their own.

This material also includes content related to the company's copyright and know - how. The records in this material are not intended to promise or guarantee the implementation and use of the company's and third - party intellectual property and other rights. Without the permission of our company, it is strictly prohibited to reprint, copy any part of this work, or disclose the material information to third parties.

RLC shall not be held responsible for any damage or harm that occurs which is not related to the product itself, as well as for any infringement of third - party rights such as intellectual property rights.

For more details about this material, please contact our sales office.